

Indian Blanket

Indian summer calls for a throw touched with turquoise, sand, and gold. Make the panels as directed, and ornament them with stitchery inspired by native American designs.



FINISHED SIZE
Approximately 50" x 70".

MATERIALS

Yarn description: Worsted-weight machine-washable wool.

Yarn pictured: Scheepjeswol® Superwash Plus, 50-gr. skeins, 22 Cream #7626, 10 Neutral #7653, 6 each Yellow #7658, Brick #7603, Brown #7655, Jade #7654.

TOOLS AND EQUIPMENT

Size J afghan hook, size I crochet hook, or sizes to obtain gauge; tapestry needle.

GAUGE
4 hdc = 1", 3 rows = 1"

DIRECTIONS

Afghan st: Row 1: *Step 1:* Keeping all lps on hook, draw up a lp through top lp only, in 2nd ch from hook and each ch across = same number of lps as chs. Do not turn.

Step 2: Yo and draw through first lp on hook, * yo and through 2 lps on hook; rep from * across (1 lp rem on hook for the first lp of next row). Do not turn.

Row 2: *Step 1:* Keeping all lps on hook, draw up a lp from under 2nd vertical bar, * draw up a lp from under next vertical bar; rep from * across. Do not turn.

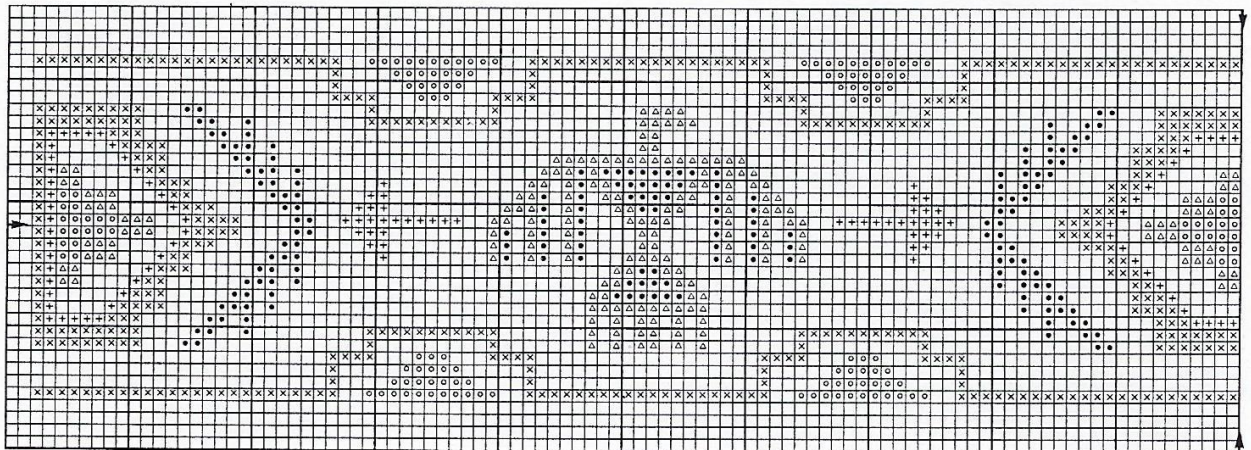
Step 2: Rep Step 2 of Row 1.
Rep both steps of Row 2 for number of afghan st rows specified.

Cross-stitch panels (make 2): With afghan hook and cream, ch 37. Work in afghan st until 200 rows from beg.

Row 201: Sc across row by inserting hook under each vertical bar. Fasten off.

Block each panel. Beg at left-hand edge of panel, work cross-stitch design to center point according to chart and color key. Reverse design at center for mirror image.

●	7653 Neutral
○	7658 Yellow
△	7603 Brick
+	7655 Brown
×	7654 Jade



Center panels: Row 1: Using crochet hook, with cross-stitched panel turned to work across top edge and right side facing, join brick in corner, ch 2 for first hdc, * hdc in each of next 2 sts (row edges), yo and draw up a lp from 2 rows below, complete as a dc (long dc completed); rep from * across, end with hdc in each of last 3 sts. Turn.

Row 2: Ch 2 for first hdc, hdc in each st across. Fasten off. Turn.

Rows 3–12: Join yellow and rep Row 2. At end of Row 12, fasten off.

Row 13: Join jade and rep Row 1.

Rows 14–16: Rep Row 2. At end of Row 16, fasten off.

Rows 17 and 18: Join brown; rep Row 2. At end of Row 18, fasten off.

Row 19: Join cream yarn and rep Row 1.

Rows 20–37: Rep Row 2. At end of Row 37, fasten off.

Row 38: Join brick; rep Row 1.

Rows 39–41: Rep Row 2. At end of Row 41, fasten off.

Row 42: Join neutral and rep Row 1.

Row 43: Rep Row 2. Fasten off.

Rows 44–47: Join cream and rep Row 2. At end of Row 47, fasten off.

Rows 48 and 49: Join brown; rep Row 2. At end of Row 49, fasten off.

Row 50: Join jade and rep Row 1.

Row 51: Rep Row 2. Fasten off.

Rows 52–59: Join neutral and rep Row 2. At end of Row 59, fasten off.

Rep Rows 1–59 on the rem cross-stitched panel.

Match Row 59 of each panel and whipstitch tog with neutral.

End panels: Row 1: Using crochet hook, with cross-stitched panel turned to work across bottom edge and right side facing, join brick in corner, ch 2 for first hdc, * hdc in each of next 2 sts (row edges), yo and draw up a lp from 2 rows below, complete as dc (long dc completed); rep from * across, end with hdc in each of last 3 sts. Turn.

Row 2: Ch 2 for first hdc, hdc in each st across. Fasten off. Turn.

Rows 3–6: Join brown; rep Row 2. At the end of Row 6, fasten off.

Row 7: Join cream; rep Row 1.

Rows 8–10: Rep Row 2. At the end of Row 10, fasten off.

Row 11: Join neutral and rep Row 1.

Rows 12–20: Rep Row 2. At the end of Row 20, fasten off.

Row 21: Join cream; rep Row 1.

Rows 22–28: Rep Row 2. At the end of Row 28, fasten off.

Rep Rows 1–28 on rem cross-stitched panel.

Edging: Rnd 1: With right side facing, join cream in any corner, work 3 sc in corner, * sc evenly to next corner, work 3 sc in corner; rep from * around afghan. Join with sl st to first sc.

Rnd 2: Rep Rnd 1. Fasten off.

