

**Crystal Palace Yarns**  
**Free Knit Pattern - Lace Scarf**

**Madeira Cascade**  
**Kid Merino Lace Scarf**

**Finished size:** 9" x 60"

[[See another Kid Merino Lace Scarf pattern here, an easier one to knit.](#)]

**MATERIALS:**

2 - 25 gr. balls **Crystal Palace Yarns [Kid Merino Yarn](#)**, (25 gr = 234 yds).

Color #204, natural

**[Crystal Palace Bamboo Needles](#):** 9 inch size 8

**GAUGE:** 5.5 sts 1" in lace pattern. Take time to check the gauge.  
Kid Merino is held double throughout the knitting.

**Abbreviations:**

pssso: Pass slip stitch over

sl1: slip 1 stitch

yo: yarn over

tog: together

**Note:** This scarf is knit in two pieces, from the ends to the center back, where the two pieces are grafted together.

**SCARF:** Cast on 45 sts VERY loosely. Begin pattern stitch.

**Pattern Stitch:**

**Row 1:** (right side): Knit.

**Row 2:** (and all wrong-side rows): Purl.

**Row 3:** K2, \* k1, yo, k8, (sl1, k2tog, pssso), k8, yo; repeat from \*, end k3.

**Row 5:** K2, \* k2, yo, k7, (sl1, k2tog, pssso), k7, yo, k1; repeat from \*, end k3.

**Row 7:** K2, k2 tog, \* yo, k1, yo, k6, (sl1, k2tog, pssso), k6, yo, k1 yo, (sl1, k2tog, pssso); repeat from \* to last 4 sts, end yo, (sl1, k1, pssso), k2.

**Row 9:** K2, \* k4, yo, k5, (sl1, k2tog, pssso), k5, yo, k3; repeat from \*, end k3.

**Row 11:** K2, \* k1, yo, (sl1, k2tog, pssso), yo, k1, yo, k4, (sl1, k2tog, pssso), k4, yo, k1, yo (sl1, k2tog, pssso), yo; repeat from \*, end k3.

**Row 13:** K2, \* k6, yo, k3, (sl1, k2tog, pssso), k3, yo, k5: repeat from \*, end k3.

**Row 15:** K2, k2tog, \* yo, k1, yo, (sl1, k2tog, pssso), yo, k1, yo, k2, (sl1, k2tog, pssso), k2, [yo, k1, yo, (sl1, k2tog, pssso)] twice; repeat from \* to last 4 sts, end yo, (sl1, k1, pssso), K2.

**Row 17:** K2, \* k8, yo, k1, (sl1, k2tog, pssso), k1, yo, k7; repeat from \*, end k3.

**Row 19:** K2, \* [k1, yo, (sl1, k2tog, pssso), yo] 5 times; repeat from \*, end k3.

**Row 20:** Purl

Repeat these 20 rows nine more times.

Place these stitches on a holder.



A luscious scarf with only two balls.



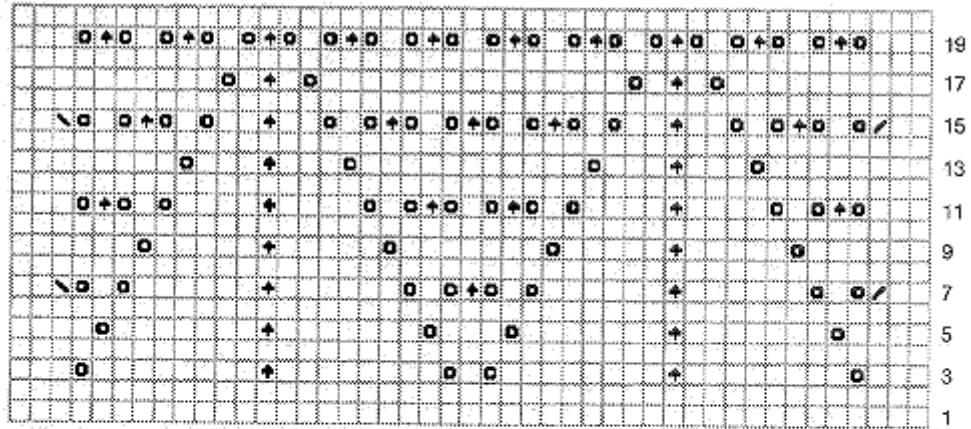
The scarf is super soft and drapey.

Closeup of one end of scarf above.

Cast on 45 sts and knit second half exactly as first half.  
 Graft together the two halves of the scarf, using the Kitchener stitch.

Wash or dampen thoroughly and block (DO NOT STEAM TO BLOCK). Pin scarf to large towel and let dry.

(These directions will produce a scarf approximately 60" long. For a longer or shorter scarf, change the number of repeats of pattern, but always end with line 20 of pattern.)



- Knit on right side, purl on wrong side
- Yarn over needle
- Knit two together
- Slip one, knit one, pass slipped stitch over
- Slip one, knit two together, pass slipped stitch over

*Designed by Melanie Lewis, Berkeley, California*

*Knit by Yvonne Ahoy*

*copyright 1998-20012 Crystal Palace Yarns - this pattern may be used for non-commercial personal or guild use.*

*copyright 2004-05 Crystal Palace Yarns/Straw Into Gold, Inc. - We are happy to share this free knitting pattern with knitters. The pattern may be used for non-commercial personal or knitting guild use. It is not to be used in any publication in print nor should it be reproduced in electronic/digital format without permission. Knitting shops carrying **CP Yarns Kid Merino** are welcome to print and share this pattern with customers of our yarns.*

Crystal Palace Yarns, Richmond, CA 94804  
 phone: 510-237-9988, fax: 510-237-9809