

# Mosaic Patterns

Mosaic patterns are *magical*. You work with only 1 yarn at a time for 2 rounds, and after a few rounds, a lovely complex pattern emerges. You can choose to work the pattern as a garter-stitch fabric (knit the first round and purl the second) or as a stockinette-stitch fabric (knit every round). Either way, these are certainly distinctive socks. Using hand-painted yarn makes for lots of visual interest without any more work. You also have the option of working the heel and foot in a solid color.

## Materials

Referring to “Sock Yarn” and “Sock Basics” on pages 8–17, gather materials for the socks you’d like to make. You will need 1 dark and 1 light yarn for each pair of socks.

Ring markers (for 2 circular needles technique)

Skill Level: Experienced 



*Caesar's Check made with Shepherd Sock from Lorna's Laces (colors 16 Charcoal, 92 River) on size 1 needles with a gauge of 9½ sts to 1".*



*Maze made with Gems Opal from Louet Sales (colors 56 Navy, 01 Champagne) on size 2 needles with a gauge of 7½ sts to 1" in single color St st or mosaic, and 8½ sts to 1" in pinstripe patt.*



## Directions

Select the number of sts to CO based on the gauge for your yarn and needles and the circumference of the intended foot.

Stitch Table															
Gauge Sts/1"	Foot Circumference in Inches														
	5	5½	6	6½	7	7½	8	8½	9	9½	10	10½	11	11½	12
Number of Stitches to CO															
5½	28					42	42				56	56			
6					42				56	56					
6½				42				56				70	70		
7			42				56				70			84	84
7½		42				56				70			84		
8					56			70	70			84			98
8½	42			56							84			98	
9							70			84			98		112
9½			56			70			84			98		112	
10		56			70			84			98		112		

### Caesar's Check Sock

The leg of this sock is worked in Caesar's Check patt, a garter-stitch-based patt, which requires working every other rnd in purl. It's a denser fabric but results in a more textured fabric. The foot is worked in a loose rib that cont the stripe sequence of the leg.

#### Cuff and Leg

Using long-tail CO and dark, CO 28 (42, 56, 70, 84, 98, 112) sts. Divide sts per needle as follows:

4 dpn	5 dpn	2 circular needles
(7, 7, 14), (7, 14, 21), (14, 14, 28), (14, 21, 35), (21, 21, 42), (21, 28, 49), (28, 28, 56)	(7, 7, 7, 7), (7, 14, 7, 14), (14, 14, 14, 14), (14, 21, 14, 21), (21, 21, 21, 21), (21, 28, 21, 28), (28, 28, 28, 28)	14 (21, 28, 35, 42, 49, 56)

Join, being careful not to twist sts, and work K1, P1 ribbing for 1½".

Knit 1 rnd with dark. Beg working patt of choice, adding light. Work to desired length; end by working a complete patt rep or at an attractive place at top of heel.

#### Heel Flap

Heel is worked back and forth in rows on 14 (20, 28, 34, 42, 48, 56) sts, beg with WS row and ending with RS row.



## Maze Sock

The leg of this sock is worked in Maze patt, which is a St-st-based patt. The foot is worked in St st with Fair Isle pinstripe patt.

### Cuff and Leg

Using long-tail CO and dark, CO 28 (42, 56, 70, 84, 98, 112) sts. Divide sts per needle as follows:

4 dpn	5 dpn	2 circular needles
(7, 7, 14), (7, 14, 21), (14, 14, 28), (14, 21, 35), (21, 21, 42), (21, 28, 49), (28, 28, 56)	(7, 7, 7, 7), (7, 14, 7, 14), (14, 14, 14, 14), (14, 21, 14, 21), (21, 21, 21, 21), (21, 28, 21, 28), (28, 28, 28, 28)	14 (21, 28, 35, 42, 49, 56)

Join, being careful not to twist sts, and work K1, P1 ribbing for 1½".

Knit 1 rnd with dark. Beg working patt of choice, adding light. Cont to desired leg length; end by working rnd 15 or 31, or work only first of 2 rnds of last rep. This will allow you to work instep sts of gusset, pick up rnd with only 1 color, and then beg color work on first rnd after all sts are picked up. Stick with me—it will be easier later.

### Heel Flap

Use dark for heel and heel turn.

Heel is worked back and forth in rows on 14 (20, 28, 34, 42, 48, 56) sts, starting on WS row, and end heel turn by working RS row.

Rearrange sts for heel as follows:

Sl 0 (1, 0, 1, 0, 1, 0) sts from needle 3 to needle 1. Work heel on needle 3.	Sl 0 (1, 0, 1, 0, 1, 0) sts from needle 4 to needle 1. Sl all sts from needle 4 to needle 3 to work heel. Work heel on needle 3.	Sl 0 (1, 0, 1, 0, 1, 0) sts from needle 2 to needle 1. Work heel on needle 2.
--	---	--

Heel-st patt:

**Row 1 (WS):** K3, purl to end of row.

**Row 2:** P3, \*K1, sl 1, rep to last 3 sts, K3.

Rep rows 1 and 2 for 14 (20, 28, 34, 42, 48, 56) total rows in heel flap, ending with RS row.

### Heel Turn

**Row 1 (WS):** P9 (12, 16, 19, 23, 26, 30) sts, P2tog, P1, turn.

**Row 2:** Sl 1, K5, ssk, K1, turn.

**Row 3:** Sl 1, purl to within 1 st of gap, P2tog (1 st on either side of gap), P1, turn.

**Row 4:** Sl 1, knit to within 1 st of gap, ssk, K1, turn.

Rep rows 3 and 4, inc 1 additional knit or purl st after sl 1 until all side sts are worked, ending with RS (knit) row—10 (12, 16, 20, 24, 26, 30) sts left on heel flap.

### Gusset

Sl half of heel sts to needle 4; heel sts are now on needles 1 and 4.	Sl half of heel sts to needle 5; heel sts are now on needles 1 and 5.	Renumber needles as follows: Needle 1: Heel sts Needle 2: Instep sts
---	---	--

To work Fair Isle pinstripe patt, the entire PU round is worked in dark only and then the first gusset dec rnd is worked in dark as far as instep where you beg working Pinstripe patt with both dark and light. When you get to instep, light is there ready to beg patt. Work pinstripe patt as follows: K1 with dark, K1 with light. When you get to sole/gusset dec, cont with est pinstripe patt from instep. Make sure to always dec in same color (knit each dark st with dark, and each light st with light); this will produce an uninterrupted line along foot.



With dark and needle 1: PU 7 (10, 14, 17, 21, 24, 28) sts from side of heel flap, then PU 2 sts at top of gusset (see page 25).		
Needle 2: With dark, work 2nd rnd of last rep of Maze patt. Needle 3: PU 2 sts at top of gusset and 7 (10, 14, 17, 21, 24, 28) sts from side of heel flap, knit rem heel sts.	Needles 2 and 3: With dark, work 2nd rnd of last rep of Maze patt. Needle 4: PU 2 sts at top of gusset and 7 (10, 14, 17, 21, 24, 28) sts from side of heel flap, knit rem heel sts.	Cont with needle 1 and dark, PM, work 2nd rnd of last rep of Maze patt for 7 (11, 14, 18, 21, 25, 28) sts. Needle 2: Cont instep in est patt, PM, PU 2 sts at top of gusset, PU 7 (10, 14, 17, 21, 24, 28) sts from side of heel flap, K5 (6, 8, 10, 12, 13, 15) heel sts.
Sts per needle:		
(14, 14, 14), (18, 21, 18), (24, 28, 24), (29, 35, 29), (35, 42, 35), (39, 49, 39), (45, 56, 45)	(14, 7, 7, 14), (18, 14, 7, 18), (24, 14, 14, 24), (29, 21, 14, 29), (35, 21, 21, 35), (39, 28, 21, 39), (45, 28, 28, 45)	(21, 21), (32, 25), (38, 38), (50, 43), (56, 56), (67, 60), (73, 73)
<b>Gusset Decrease</b>		
Work first half of sole with dark only. Work 2nd half of sole with dark and light.		
<b>4 dpn</b>	<b>5 dpn</b>	<b>2 circular needles</b>
<b>Rnd 1</b> Needle 1: With dark, work to last 2 sts, ssk. Needle 2: Cont pinstripe patt from instep. Needle 3: Cont pinstripe patt from instep to last 3 sts, K2tog, K1.	<b>Rnd 1</b> Needle 1: With dark, work to last 2 sts, ssk. Needles 2 and 3: Cont pinstripe patt from instep. Needle 4: Cont pinstripe patt from instep to last 3 sts, K2tog, K1.	<b>Rnd 1</b> Needle 1: With dark, work to last 2 sts before marker, ssk, SM, cont pinstripe patt from instep. Needle 2: Cont pinstripe patt from instep to marker, SM, cont pinstripe patt from instep to last 3 sts, K2tog, K1.
Cont pinstripe patt around foot. When dec for gusset, always work dec st in same yarn, making for a nice patt line on gusset.		
<b>Rnd 2 (dec rnd)</b> Needle 1: Work to last 3 sts, K2tog, K1. Needle 2: Work est patt. Needle 3: K1, ssk, work around.	<b>Rnd 2 (dec rnd)</b> Needle 1: Work to last 3 sts, K2tog, K1. Needles 2 and 3: Work est patt. Needle 4: K1, ssk, work around.	<b>Rnd 2 (dec rnd)</b> Needle 1: Work to last 3 sts before marker, K2tog, K1, SM, work est patt. Needle 2: Work est patt, SM, K1, ssk, work around.
<b>Rnd 3</b> Work in Pinstripe patt around. Needle 1: Work est patt. Needle 2: Work est patt. Needle 3: Work est patt.	<b>Rnd 3</b> Needle 1: Work est patt. Needles 2 and 3: Work est patt. Needle 4: Work est patt.	<b>Rnd 3</b> Needle 1: Work to marker, SM, work est patt. Needle 2: Work est patt to marker, SM, work to end.
Rep rnds 2 and 3 until 28 (44, 56, 72, 84, 100, 112) total sts rem.		
<b>Foot</b>		
Cont pinstripe patt to desired heel-to-toe length.	Cont pinstripe patt to desired heel-to-toe length.	Rearrange sts so that all instep sts are on needle 1, and all sole sts are on needle 2. Cont pinstripe patt to desired heel-to-toe length.



Needle 1: Work 1 final row of pin-stripe patt. Beg of rnd is at beg of instep; this is needle 1, and sole sts on needles 2 and 3	Needle 1: Work 1 final row of pin-stripe patt. Beg of rnd is at beg of instep; this is needle 1, with instep sts on needles 1 and 2 and sole sts on needles 3 and 4.	Needle 1: Instep sts Needle 2: Sole sts
Sts per needle:		
(14, 7, 7), (22, 11, 11), (28, 14, 14), (36, 18, 18), (42, 21, 21), (50, 25, 25), (56, 28, 28)	7 (11, 14, 18, 21, 25, 28)	14 (22, 28, 36, 42, 50, 56)
<b>Toe Shaping</b>		
<b>4 dpn</b>	<b>5 dpn</b>	<b>2 circular needles</b>
Work with dark only.		
<b>Rnd 1</b> Needle 1: K1, ssk, knit to last 3 sts, K2tog, K1. Needle 2: K1, ssk, knit to end. Needle 3: Knit to last 3 sts, K2tog, K1.	<b>Rnd 1</b> Needle 1: K1, ssk, knit to end. Needle 2: Knit to last 3 sts, K2tog, K1. Needle 3: K1, ssk, knit to end. Needle 4: Knit to last 3 sts, K2tog, K1.	<b>Rnd 1</b> Needle 1: K1, ssk, knit to last 3 sts, K2tog, K1. Needle 2: K1, ssk, knit to last 3 sts, K2tog, K1.
<b>Rnd 2:</b> Knit around. Rep rnds 1 and 2 until 12 (20, 28, 32, 40, 48, 56) total sts rem. Rep rnd 1 only until 8 (12, 16, 16, 20, 24, 28) total sts rem. Place sts from top of sock on 1 needle and sts from bottom onto 2nd needle. Graft toe sts tog with kitchener st (see page 24).		

# Stitch Dictionary

Instructions are for working patterns in the round. Only odd-numbered rounds are shown on charts. On the right-hand side of each chart is a column of white and black squares separated by a blank column. Refer to this first column of squares when working the charts. The basic rule is that on all rows that begin with a white square, you knit the white squares and slip the black squares; on all rows that begin with a black square, you knit the black squares and slip the white squares. Work all even-numbered rows as indicated in the text. On all rounds, work all slip stitches by slipping stitch purlwise with yarn in back.

## Caesar's Check

Rnds 1, 5, 9, 13: With B, \*K7, (sl 1, K1) 3 times, sl 1, rep from \*.

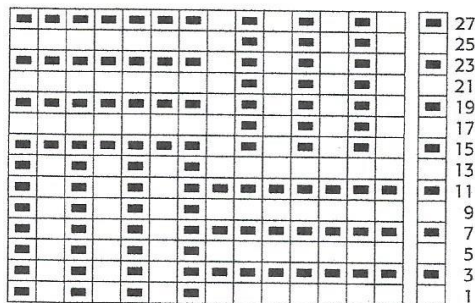
Rnd 2 and all even-numbered rnds: With same color as previous rnd, purl the knit sts worked on previous rnd; sl same slipped sts.

Rnds 3, 7, 11: With A, \*K8, (sl 1, K1) 3 times rep from \*.

Rnds 15, 19, 23, 27: With A, \* (Sl 1, k1) 3 times, sl 1, K7, rep from \*.

Rnds 17, 21, 25: With B, \*(K1, sl 1) 3 times, K8, rep from \*.

Rnd 28: As rnd 2.  
Rep rnds 1-28.



## Maze

Rnd 1: With B, \*K7, (sl 1, K1) 3 times, sl 1, rep from \*.

Rnd 2 and all even-numbered rnds: With same color as previous rnd, knit the knit sts worked on previous rnd; sl same slipped sts.

Rnd 3: With A, \*K6, (sl 1, K1) 4 times, rep from \*.

Rnd 5: With B, \*K5, (sl 1, K1) 4 times, K1, rep from \*.

Rnd 7: With A, \*K4, (sl 1, K1) 4 times, K2, rep from \*.

Rnd 9: With B, \*K3, (sl 1, K1) 4 times, K3, rep from \*.

Rnd 11: With A, \*K2, (sl 1, K1) 4 times, K4, rep from \*.

Rnd 13: With B, \*(K1, sl 1) 4 times, K6, rep from \*.

Rnd 15: With A, \*(sl 1, K1) 4 times, K6, rep from \*.

Rnd 17: With B, \*K1, sl 1, K6, (K1, sl 1) 3 times, rep from \*.

Rnd 19: With A, \*sl 1, K7, (sl 1, K1) 3 times, rep from \*.

Rnd 21: With B, \*K1, sl 1, K7, (sl 1, K1) twice, sl 1, rep from \*.

Rnd 23: With A, \*(sl 1, K1) twice, K6, (sl 1, K1) twice, rep from \*.

Rnd 25: With B, \*(K1, sl 1) twice, K6, (K1, sl 1) twice, rep from \*.

Rnd 27: With A, \*(sl 1, K1) 3 times, K6, sl 1, K1, rep from \*.

Rnd 29: With B, \*(K1, sl 1) 3 times, K7, sl 1, rep from \*.

Rnd 31: With A, \*(sl 1, K1) 4 times, K6, rep from \*.

Rnd 32: As rnd 2.  
Rep rnds 1-32.

